

Connect with Great Lakes Research

The Great Lakes Regional Research Information Network (GLRRIN) is a new binational, collaborative effort among federal and state agencies, academic institutions, and the private sector involved in Great Lakes research.

Funded in June 2006 by NOAA Sea Grant, GLRRIN is designed to foster research coordination within the Great Lakes region by enhancing communications and collaboration among agencies and research scientists.

Through tools such as an enhanced database of researchers listed by interest and expertise, GLRRIN can add value to existing programs and bring projects and researchers together in one comprehensive network. GLRRIN provides a powerful means to foster collaboration, acquire funding, strengthen research needs and issues, and increase the impact of Great Lakes research.

Patterned after the successful Lake Erie Millennium Network, GLRRIN is led by four binational coordinators for each Great Lake, two from academia and two from federal/provincial agencies.



Participating Agencies and Organizations

Environment Canada
Fisheries and Oceans Canada
Great Lakes Commission
Great Lakes Fishery Commission
Illinois-Indiana Sea Grant
International Joint Commission
Michigan Sea Grant
Minnesota Sea Grant
New York Sea Grant
NOAA Great Lakes Environmental Research Laboratory
Ohio Sea Grant
Ontario Ministry of Natural Resources
University of Toronto
University of Windsor, Great Lakes Institute for Environmental Research
Upper Lakes Environmental Research Network
US Army Corps of Engineers
US EPA Large Lakes Research Station
US EPA Mid-Continent Ecology Division
US EPA Great Lakes National Program Office
US Fish and Wildlife Service
US Geological Survey
Wisconsin Sea Grant Institute

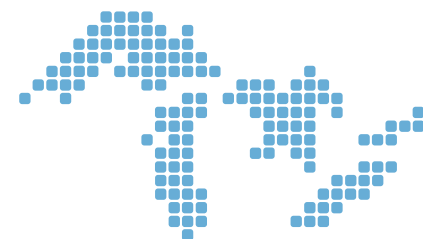
For more information about GLRRIN, contact:
Jan Ciborowski, University of Windsor
cibor@uwindsor.ca, 519.253.3000 ext. 2725

Jeff Reutter, Ohio Sea Grant
reutter.1@osu.edu, 614.292.8949

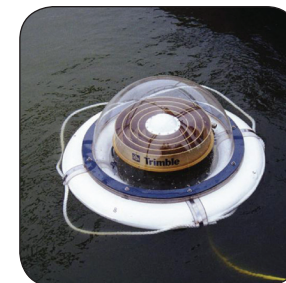
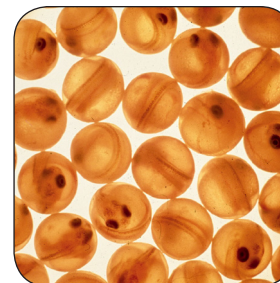
Paul Horvatin, US EPA Great Lakes National Program Office
horvatin.paul@epa.gov, 312.353.3612

For a full listing of GLRRIN representatives by Great Lake, go to www.GLRRIN.info/people.

Sign up today at www.GLRRIN.info



GLRRIN Great Lakes Regional Research Information Network



Your One-Stop Shop
for Research Information

www.GLRRIN.info

Connect with Great Lakes Research and Scientists in Just One Click...

People: Discover all agencies and organizations involved in Great Lakes research.

Research Priorities: Learn which issues are program funding priorities.

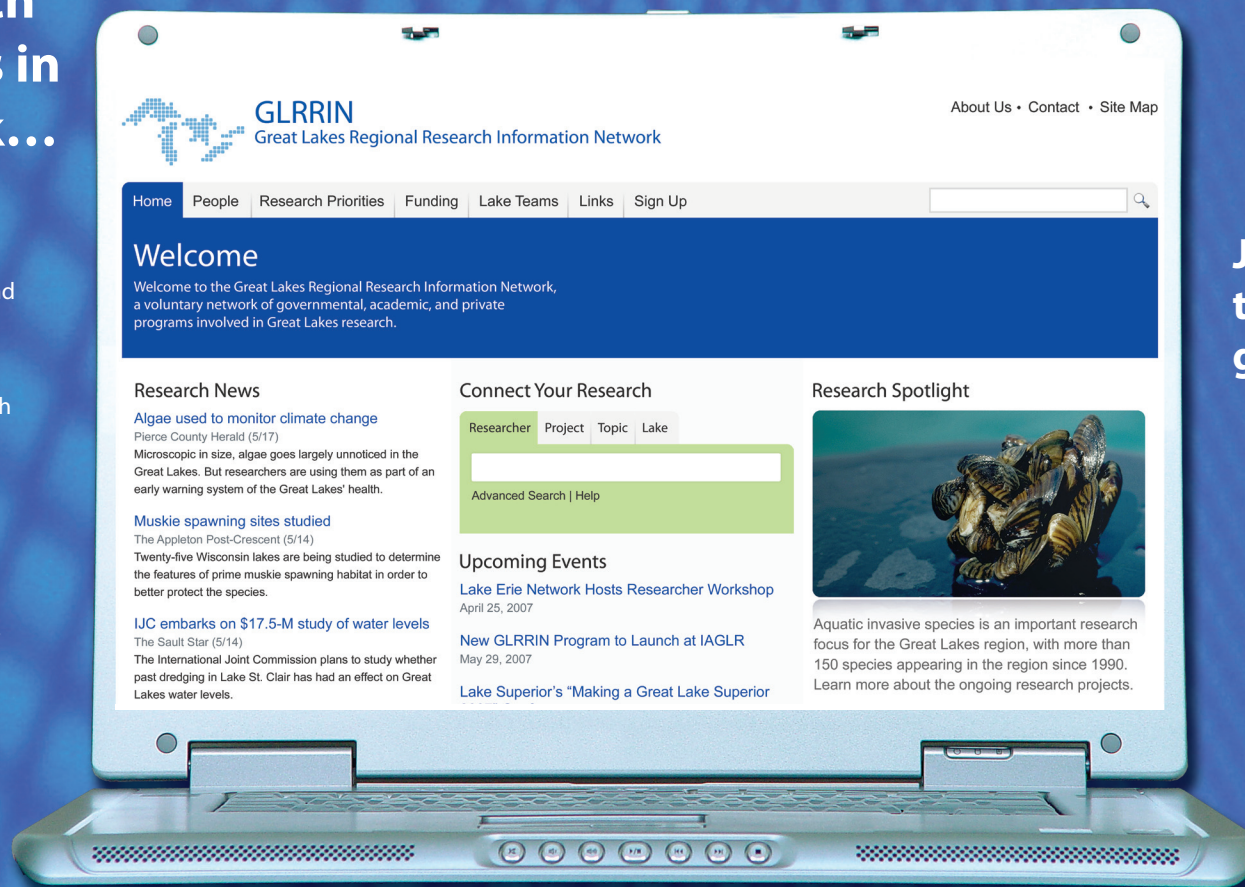
Projects: Search by more than 30 categories within the IJC's Research Inventory.

Researcher Spotlight: Get your research featured.

Funding Opportunities: Learn about funding sources, RFP deadlines, and criteria.

Researchers: Collaborate with others by searching GLRRIN's researcher database.

Upcoming Events: View updated Great Lakes workshop and conference announcements.



Join GLRRIN today and get connected.

www.GLRRIN.info

