

Ohio's Lake Erie Fisheries

2020 Outlook

Eric Weimer

Supervisor, Sandusky Fisheries Research Station





Overview

Status of Fisheries and Forecasts:

○ **Walleye**

- Harvest Trends
- Recruitment

○ **Yellow Perch**

- West vs Central Basin
- Diet trends

○ **Smallmouth Bass**

- Movement Research



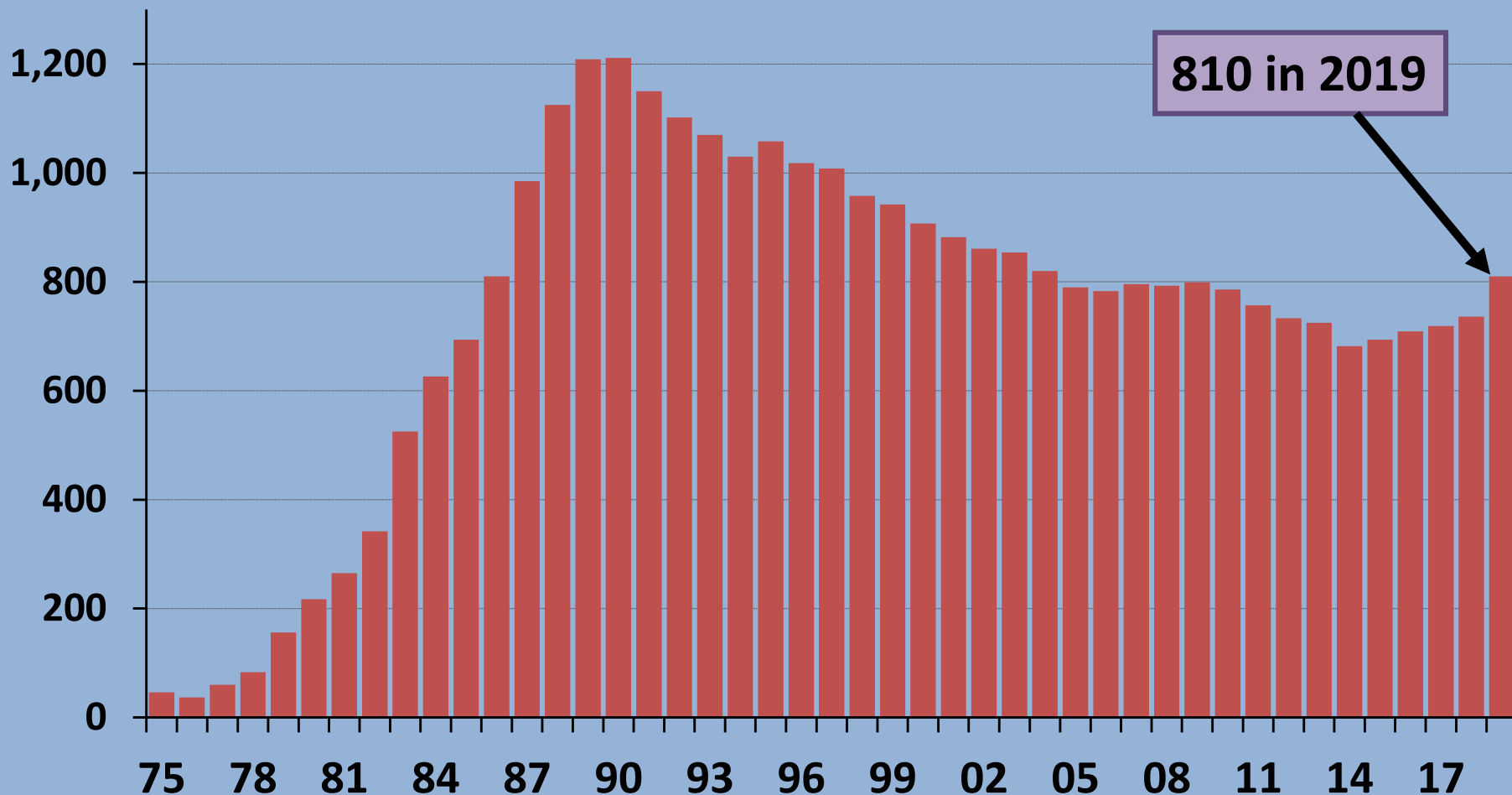
Lake Erie Fisheries 2020

- **Assessment Surveys**
 - Harvest (Creel Survey)
 - Trawling
 - Gillnet
 - SMB netting
 - Nearshore electrofishing
 - Lower trophic
 - Commercial harvest
- **Research**
 - Acoustic telemetry
 - Hypoxia
 - Population metrics





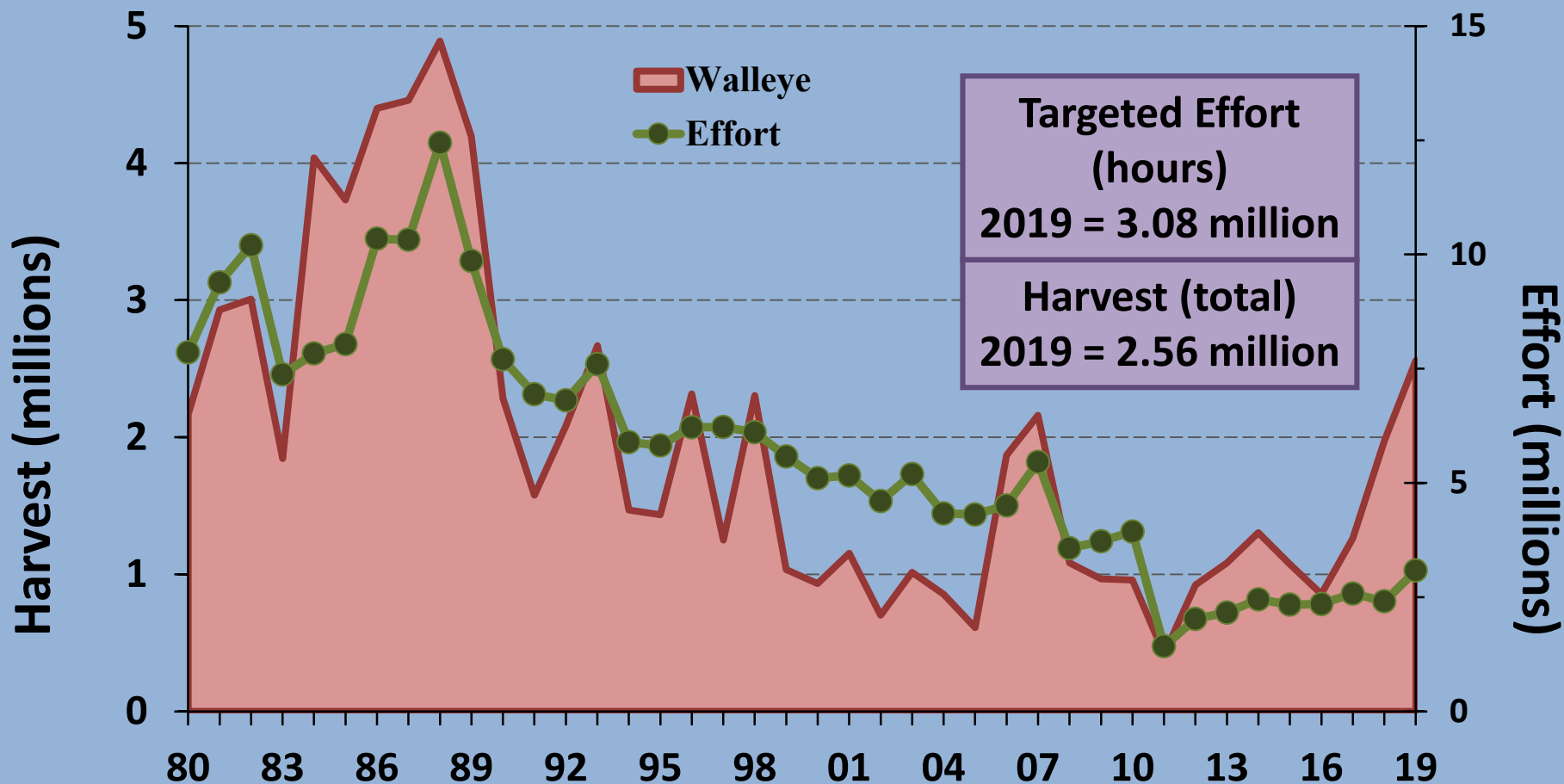
Ohio Licensed Charter Guides





Ohio Sport Fishery

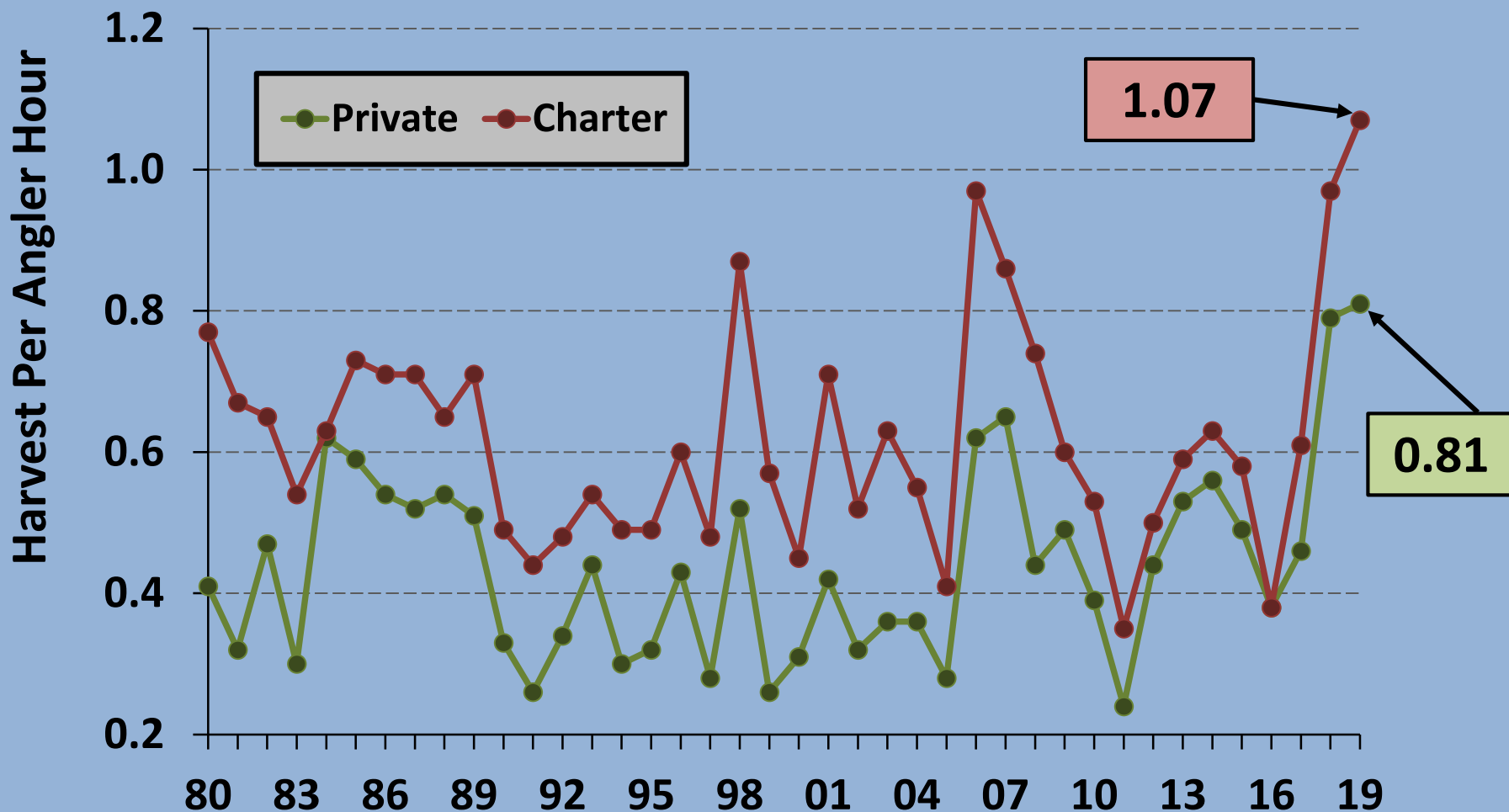
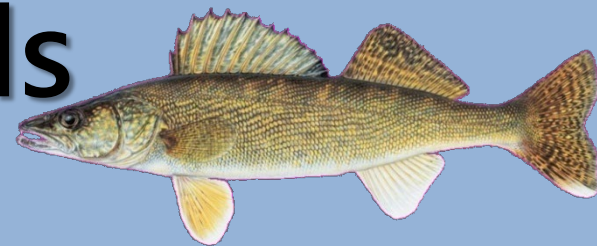
Walleye





Harvest Rate Trends

Western Basin Walleye

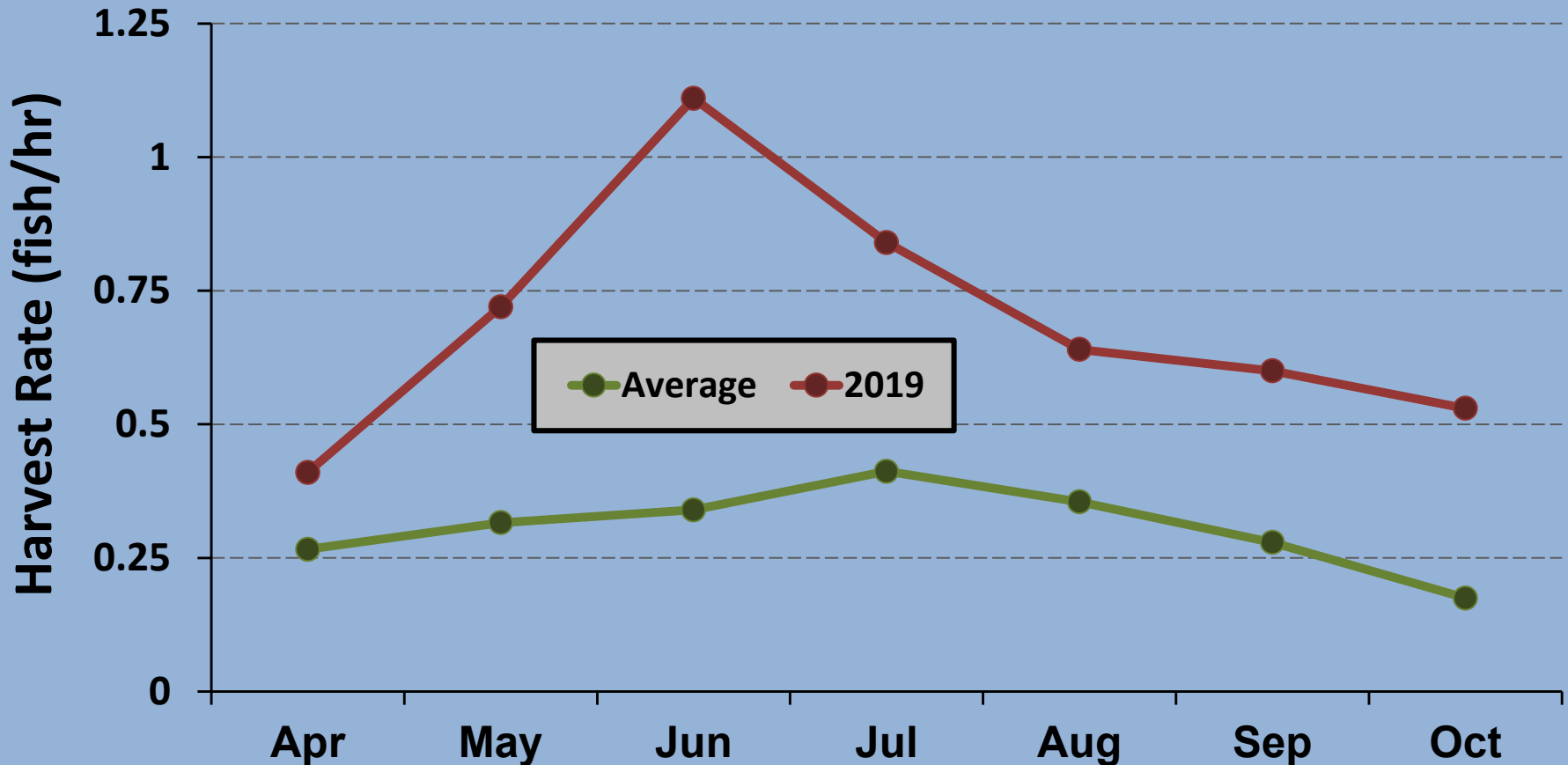




Monthly Angler Harvest Rates



Lakewide, Walleye, Private Boat

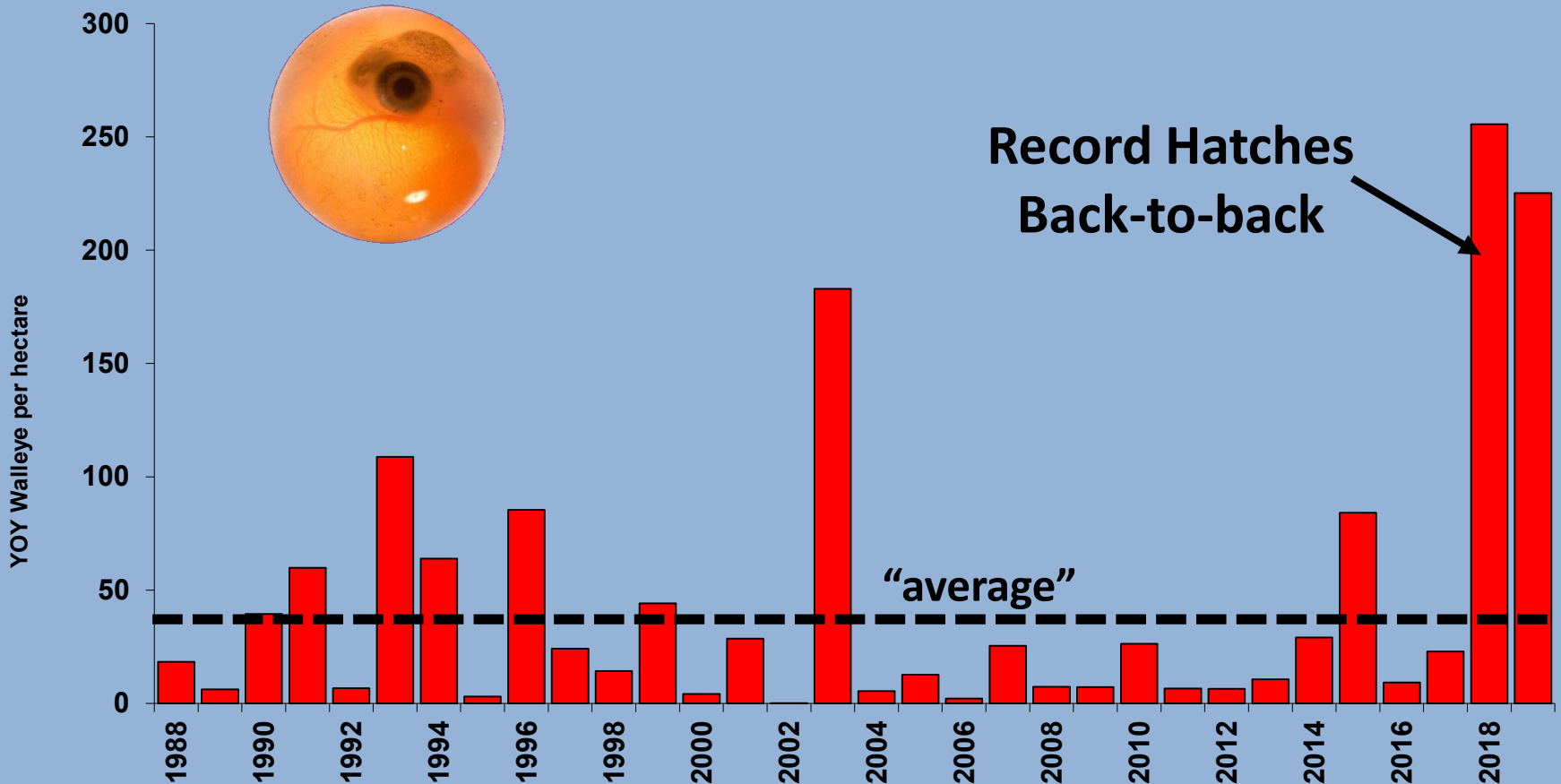




Annual Recruitment



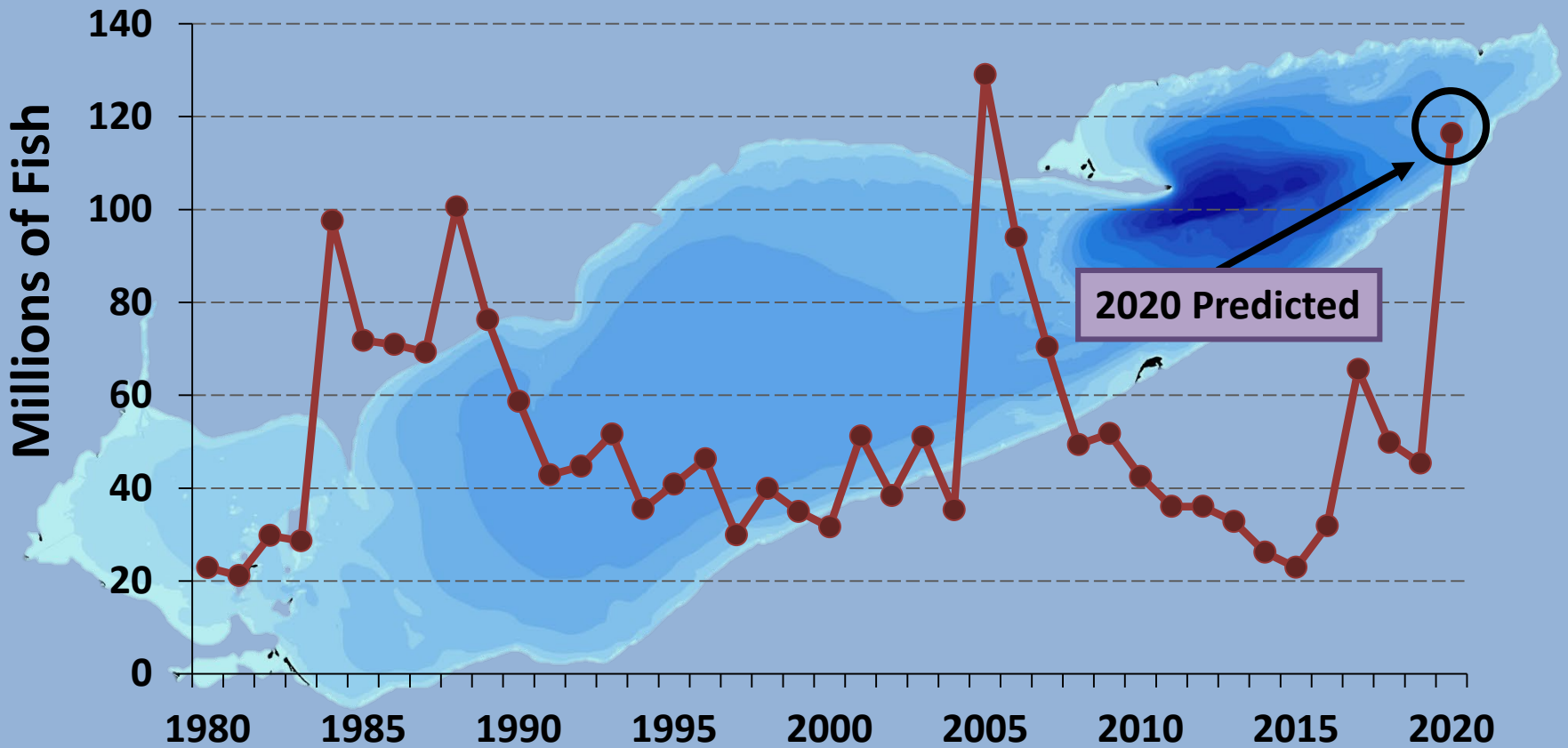
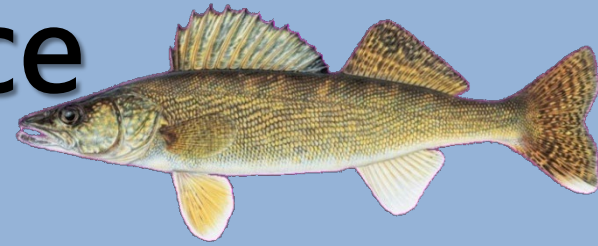
Hatch Strength W. Basin Interagency Trawls





Walleye Abundance

2020 model run





Fishery Forecast

2020 Walleye

Outstanding!

Large population!

Record Hatches across basins!
Look for the '18s and '19s

Harvest dominated by:
Age 5's (20-23")
Trophy fish still plentiful

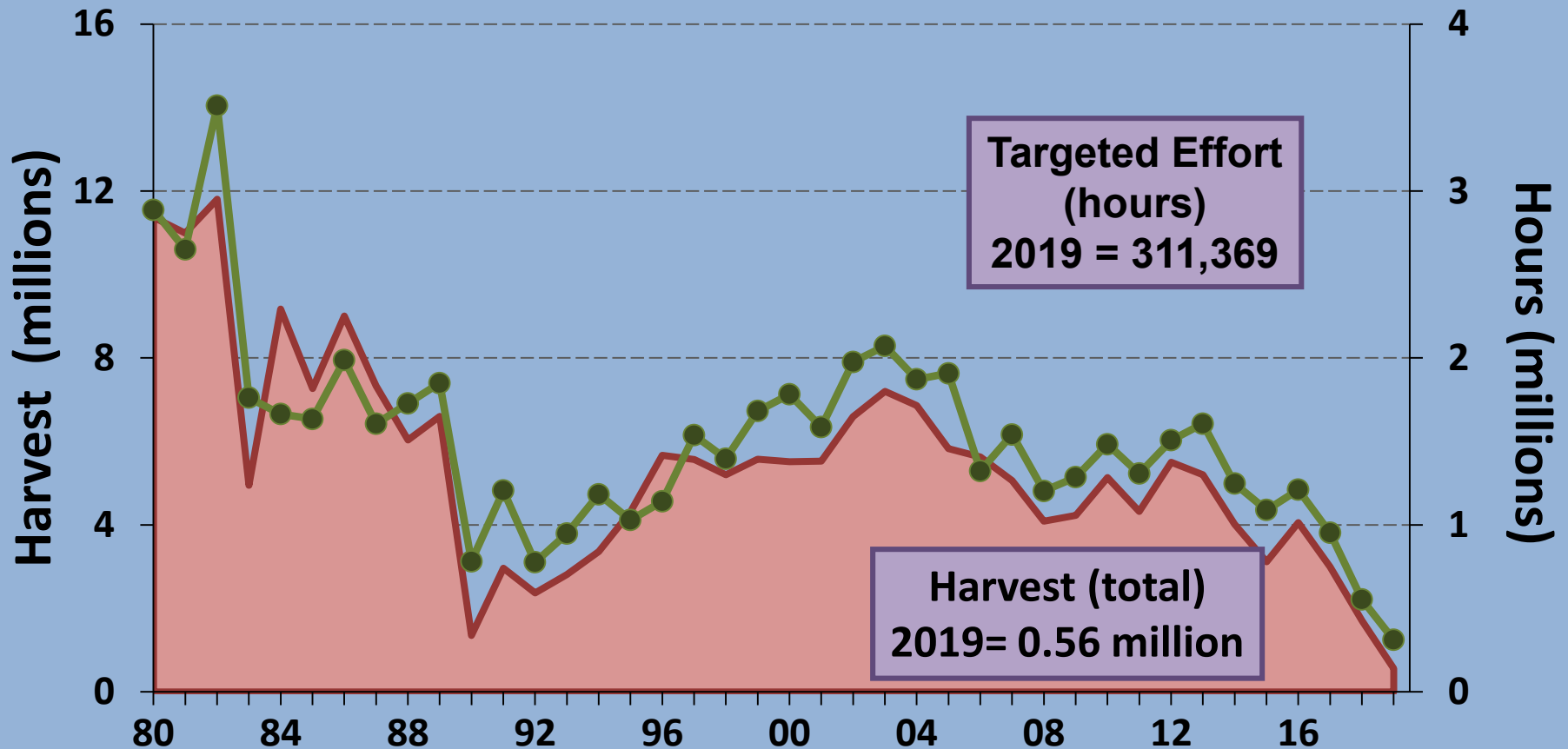


Ohio Sport Fishery

Yellow Perch



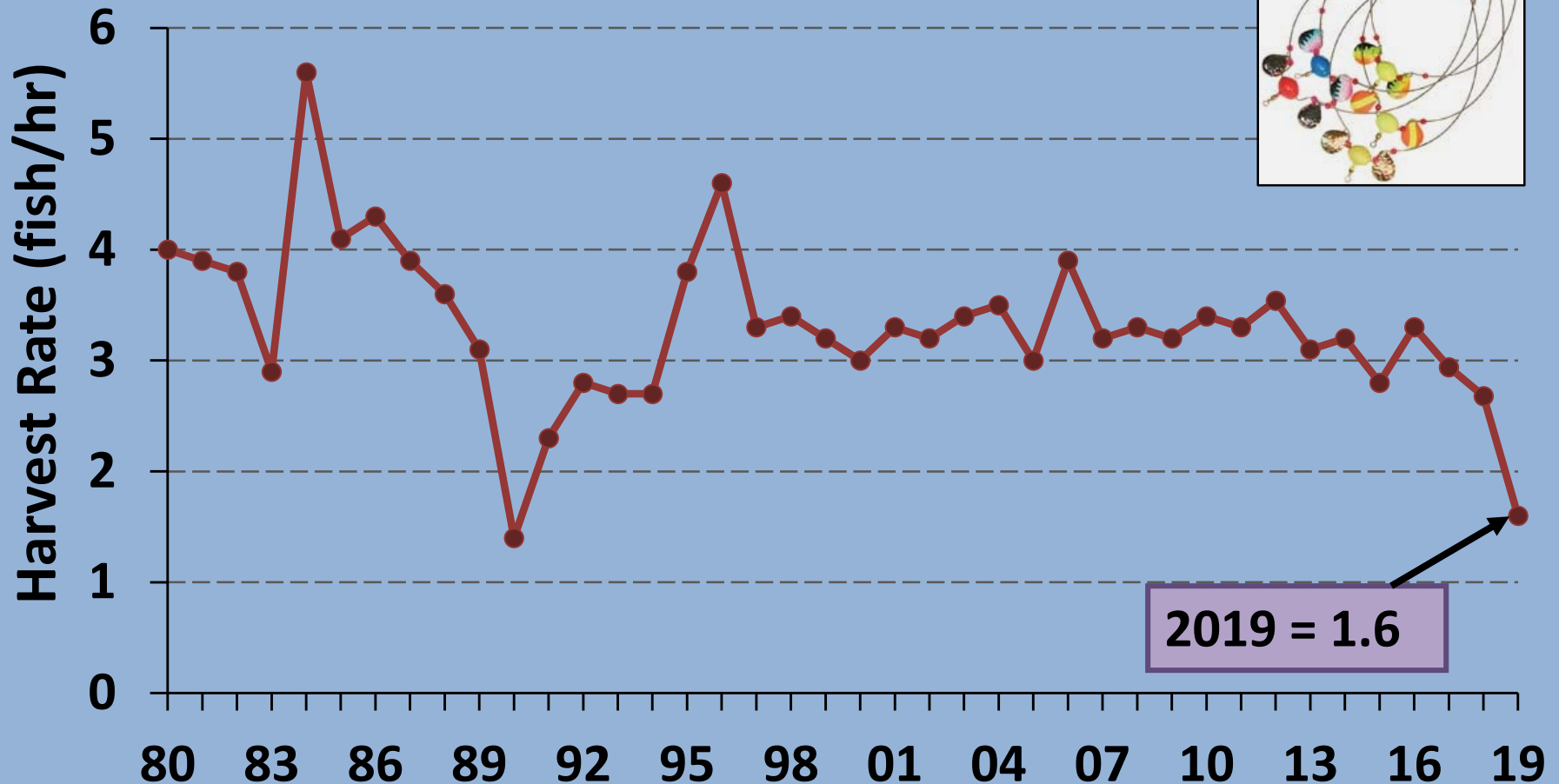
Harvest Effort





Y. Perch Fishery

All Ohio waters,
private and charter



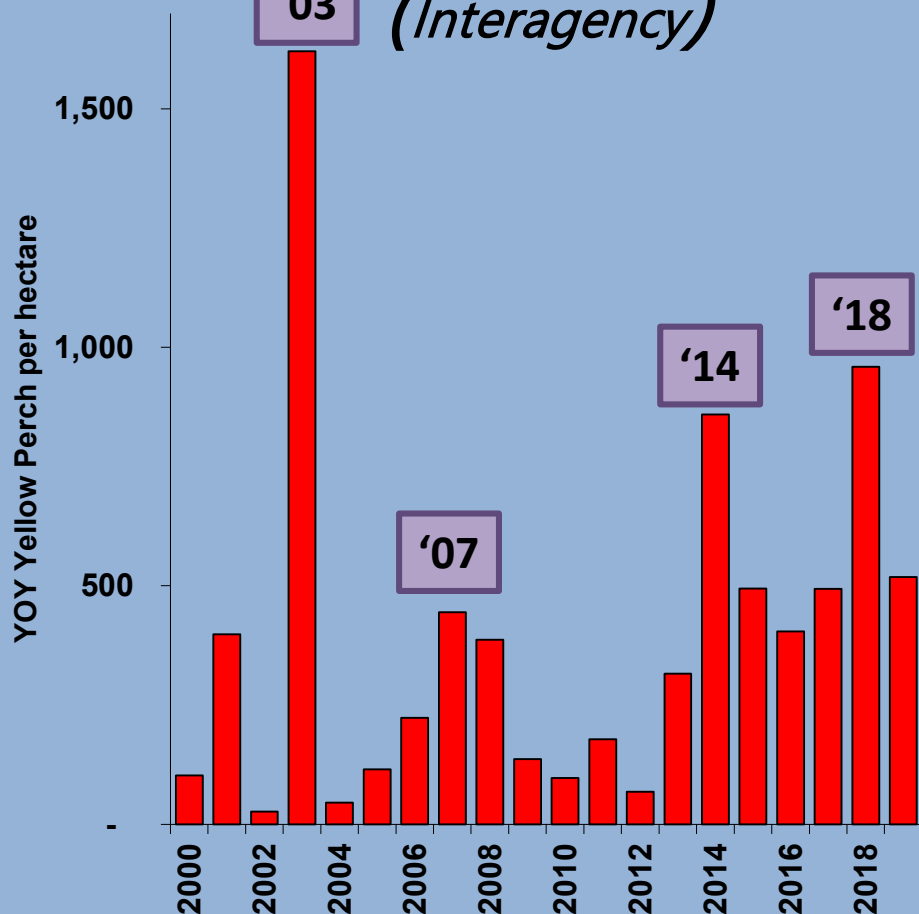


Yellow Perch Hatch



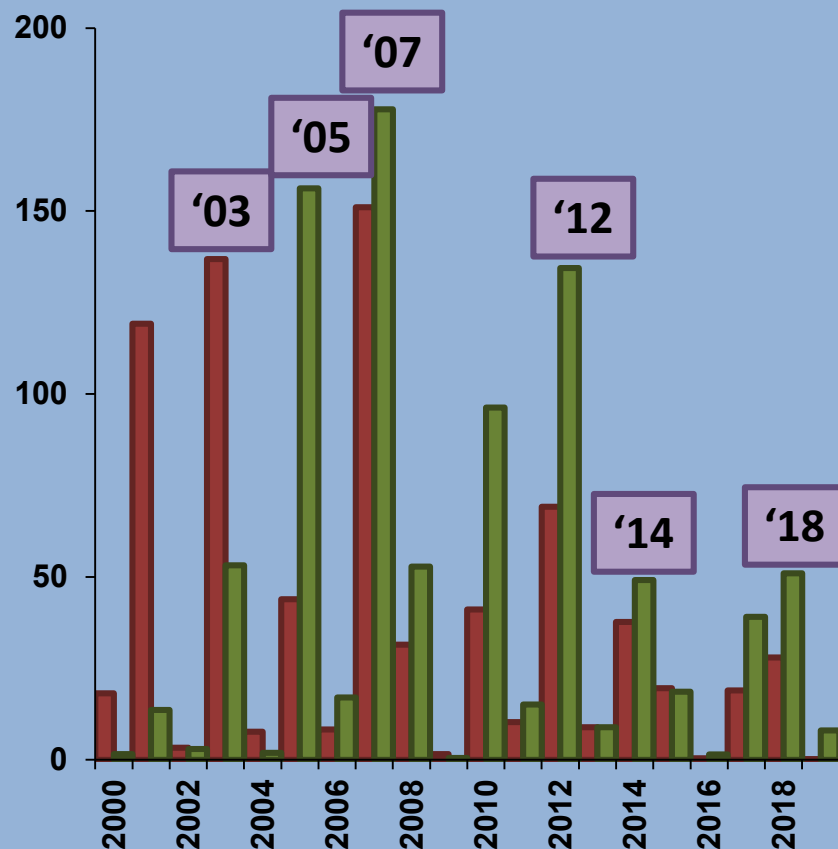
Western Basin

'03 (Interagency)



Central Basin (Ohio)

West Central East Central

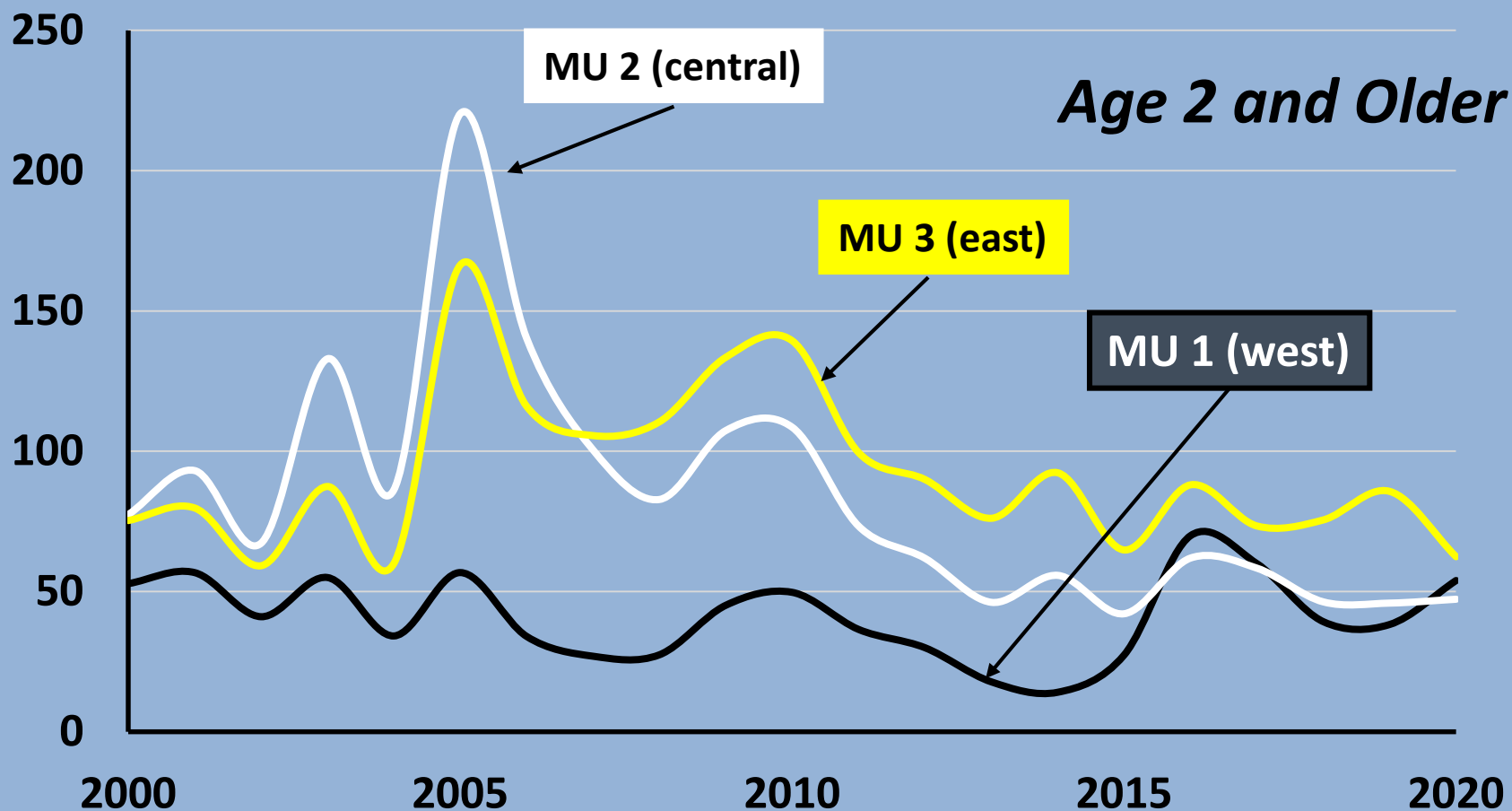




Abundance of Adult Yellow Perch

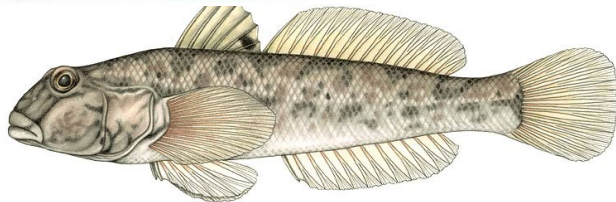
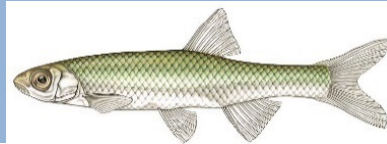
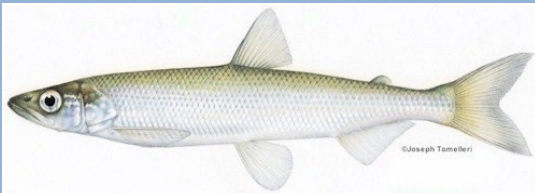
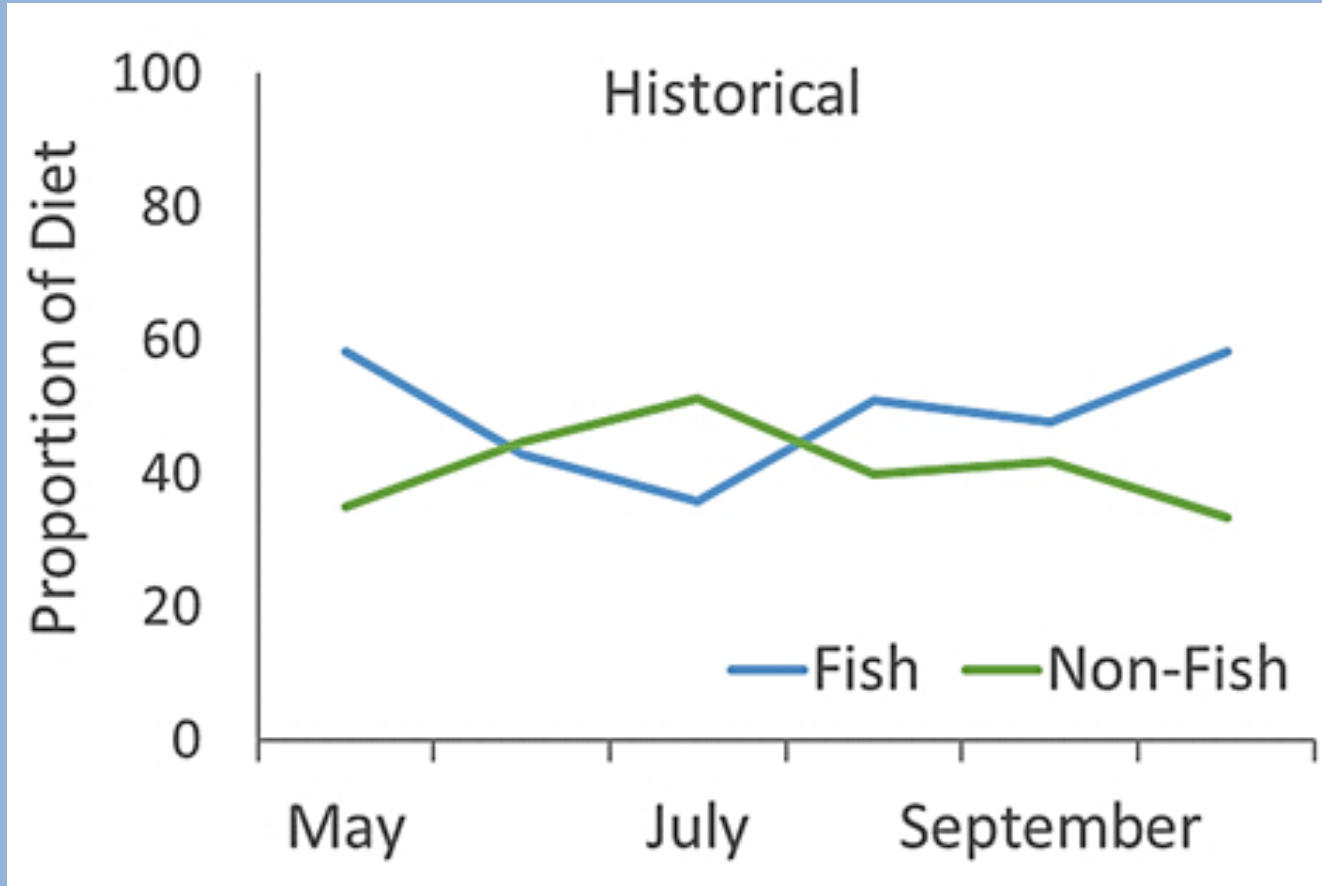


YPTG, 2020 model run



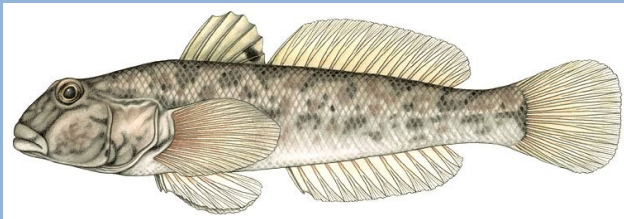
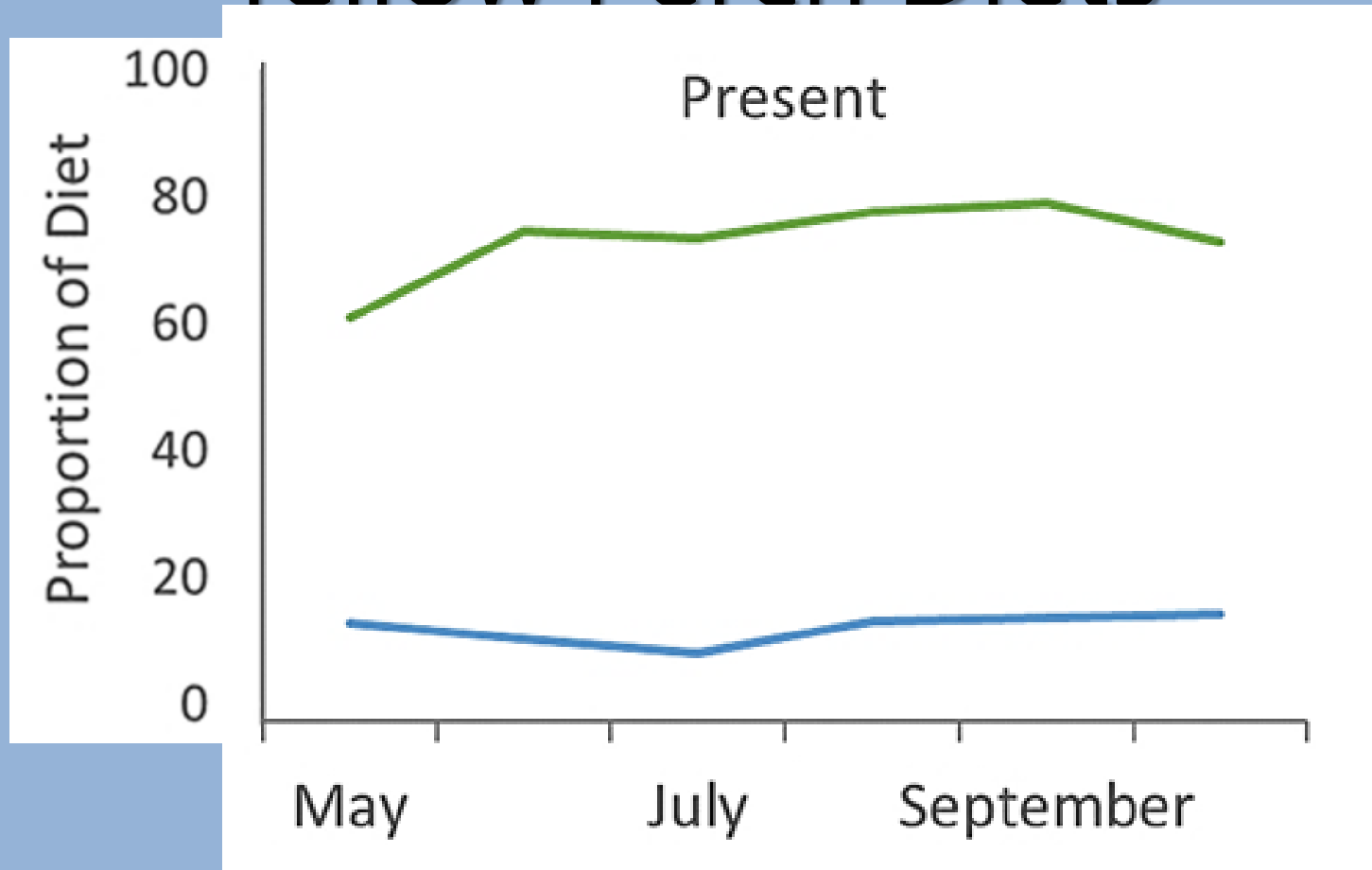


Yellow Perch Diets





Yellow Perch Diets







Fishery Forecast

2020 Yellow Perch

Fishable population in west
7 straight west hatches

**Central Basin catch rates likely
to remain low**

Catch dominated by:
Ages 2-6 west (7 – 11")
Age 6 east (10 – 11")

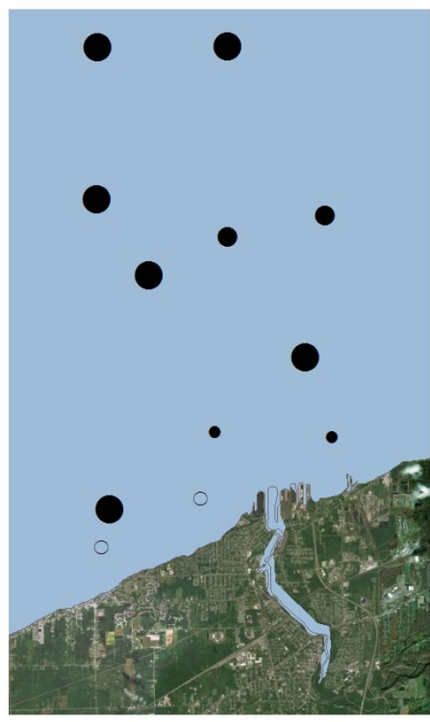
Try to 'match the hatch'

Central Basin Yellow Perch Research

Ashtabula YP Distribution

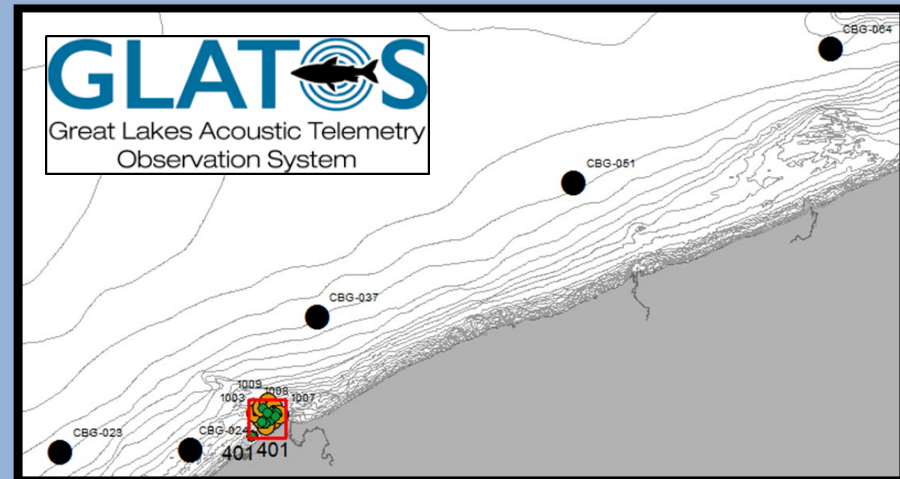


During Hypoxia



Post Hypoxia

- Collaborate with USGS, OSU, NOAA, Un. Windsor, and OMNRF
- YP Movement and Distribution
- Influence of Hypoxia

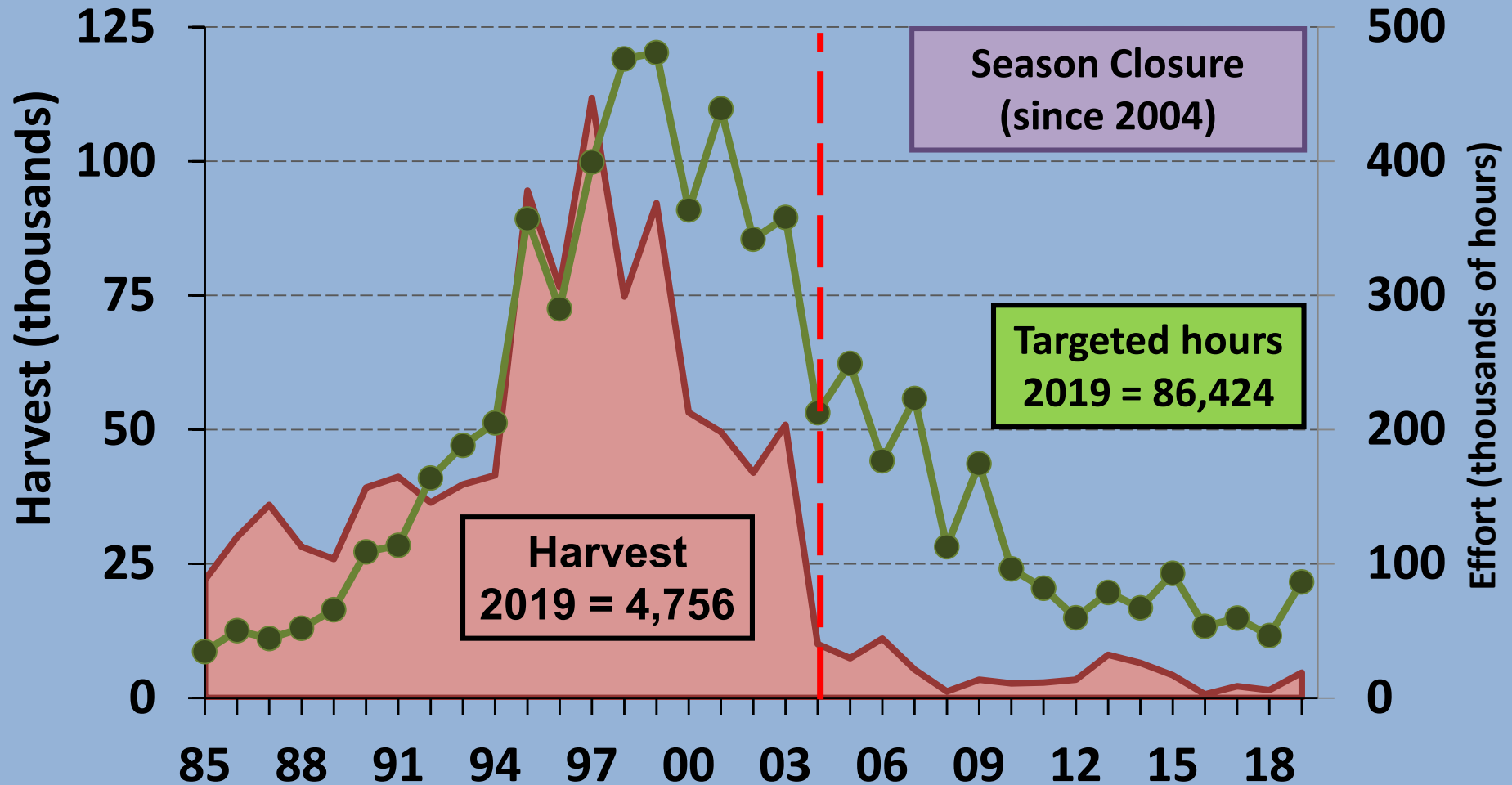




Smallmouth Bass Fishery



Ohio waters, private and charter

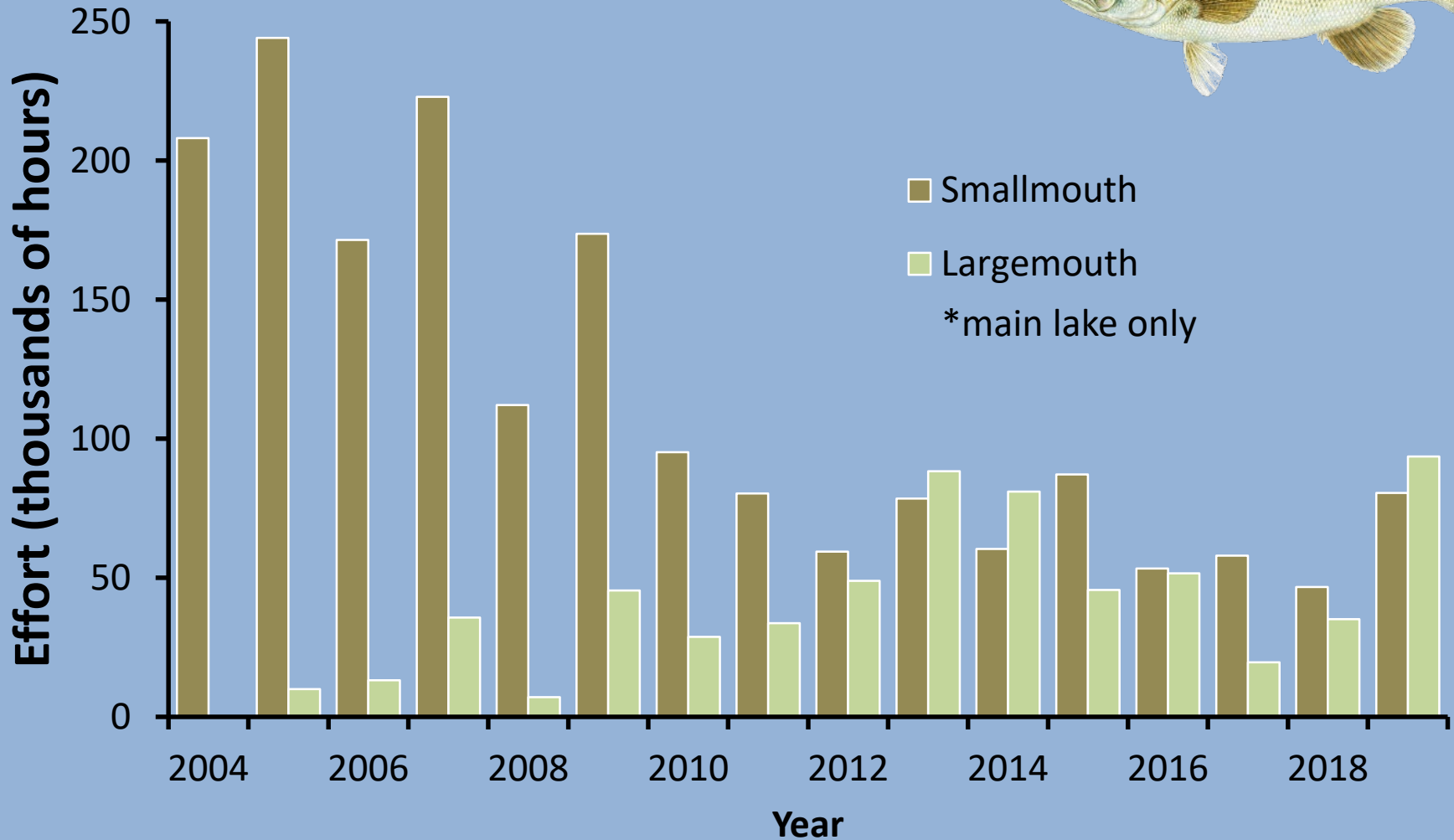




Bass Fishery Changes

Private Boats

Smallmouth/Largemouth



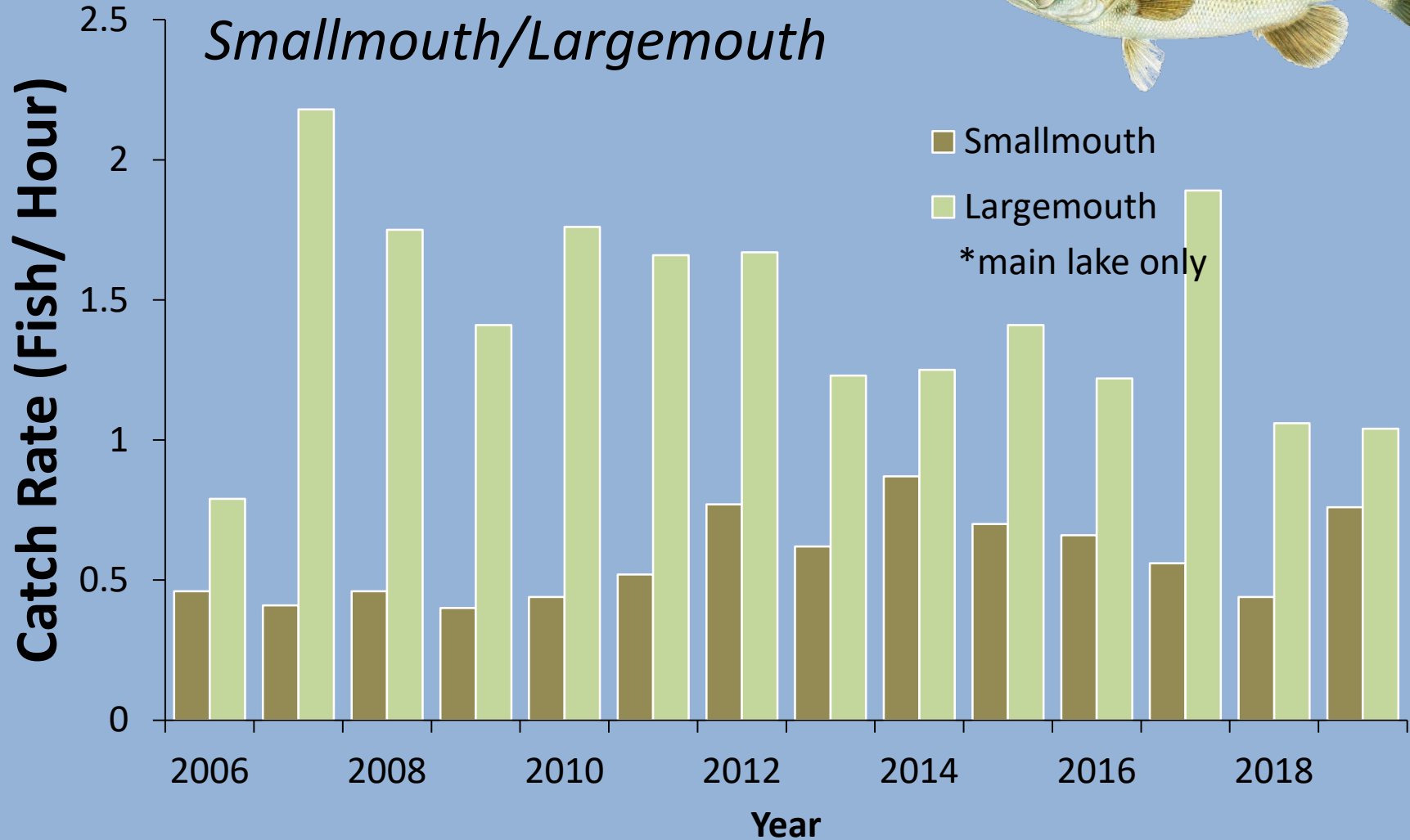


Bass Fishery Changes



Private Boats

Smallmouth/Largemouth





Fishery Forecast

2020 Black Basses

**Smallmouth catch and surveys
dominated by:**

3-4 year old fish

Older fish still abundant

Largemouth Bass a good alternative

~1 fish/hr in 2019

Largemouth surveys:

Mostly 2-3 year old fish

Some 7-8 year olds

Remember last year's reg changes

Bass Tournament Dispersal



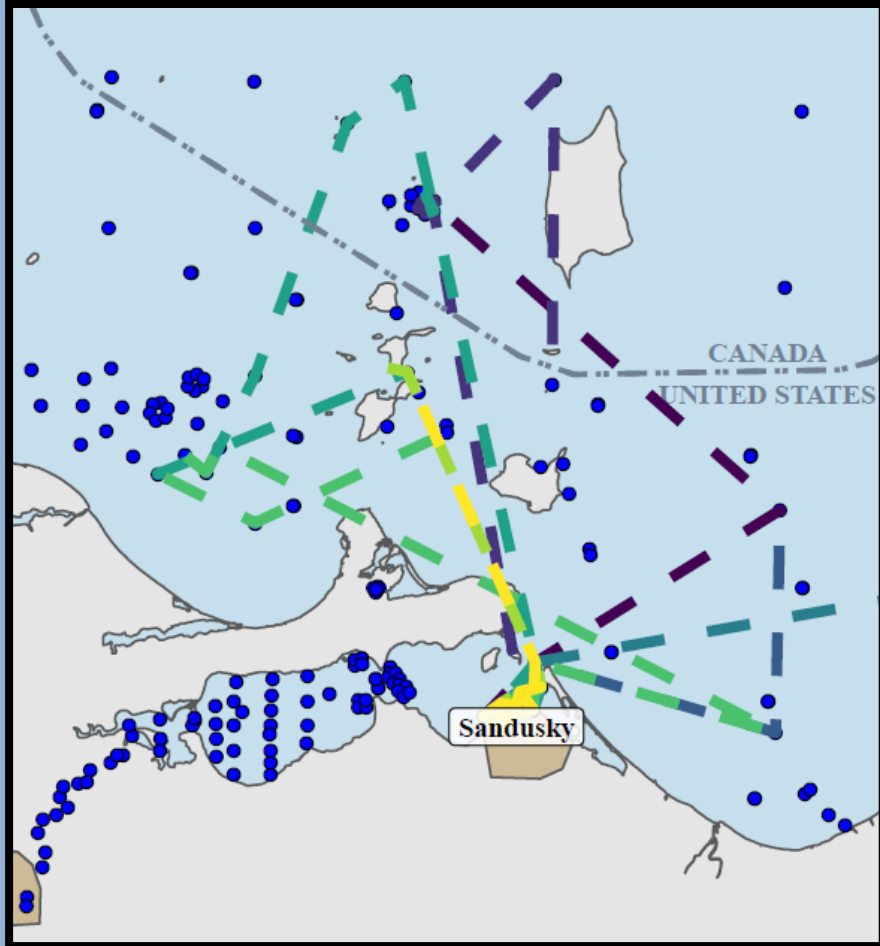
23 Smallmouth Bass

Released into Sandusky Bay

3 weeks to return to lake

**~40% remained in bay after
2 months**

West Basin Movements



8 Bass detected

**Pelee Island,
Bass Islands, Lorain**

**Moved up to 57 miles
in 1 year**



Questions?



Photo by A. Muir

- **Sandusky Fisheries Research Station**
— (419) 625-8062
- **Fairport Harbor Fisheries Research Station**
— (440) 352-4199
- **1-800-WILDLIFE**
- **1-888-HOOKFISH**
- **Wildlife.ohiodnr.gov**
— Fish Ohio forms online